

Middle East's leading cargo monthly

# CARGO talk



**FROM REACTIVE TO PREDICTIVE**  
**CARGO GETS SMARTER**



## SKYLINK CARGO SERVICES

is pleased to announce its appointment as cargo GSA for



Operating Daily Wide Body Aircraft from Dubai to Kabul

Flight No.	From	To	Dep.	Arr.	Days	Aircraft
RQ902	DXB	KBL	0300	0615	Daily	A340

Acceptable Dimensions: 315\*215\*157cms/1900 kgs per piece

Cargo handover accepted in DXB or DWC

**Contact us for rates, space and booking confirmations**

[sales@skylinkcargoservices.com](mailto:sales@skylinkcargoservices.com)



1516 BURLINGTON TOWER,  
BUSINESS BAY, DUBAI



PH. +9714 2989880  
MOBILE : +971 50 9189182



# CONTENTS MAY 2026



## Emerging technologies rule the roost in the region



### PUBLISHER

Sanjeet: [sanjeet@sanjeet.ae](mailto:sanjeet@sanjeet.ae)

### EDITORIAL TEAM

Devika Jeet: [devika@ddppl.com](mailto:devika@ddppl.com)  
Nisha Verma: [nisha.verma@ddppl.com](mailto:nisha.verma@ddppl.com)  
Eva Young: [eva.young@ddppl.com](mailto:eva.young@ddppl.com)  
Dr. Shehara Fernando: [shehara@ddppl.com](mailto:shehara@ddppl.com)  
Sonia Sali: [sonia.sali@ddppl.com](mailto:sonia.sali@ddppl.com)

### DESK EDITOR

VVN Murthi: [vn.murthi@ddppl.com](mailto:vn.murthi@ddppl.com)

### ADVERTISING TEAM

Sonia Butalia: [sonia.butalia@ddppl.com](mailto:sonia.butalia@ddppl.com)  
Rajith Fernando: [rajith@ddppl.com](mailto:rajith@ddppl.com)  
Mobile: +971529208684

### MARKETING SERVICES

Jaspreet Kaur: [jaspreet.kaur@ddppl.com](mailto:jaspreet.kaur@ddppl.com)

### DESIGN

Subhash Chaudhary

### GM (PRODUCTION)

Anil Kharbanda

### PRODUCTION MANAGER

Ramesh Gupta

### ADVERTISEMENT DESIGNER

Nitin Kumar, Aditya Pratap Singh,  
Anil Khatri Chhetri

UAE: Z1-02, P.O. Box 9348, Saif Zone,  
Sharjah, UAE, Ph: +971 6 5528954,  
Fax: +971 6 5528956  
E-mail: [talk@ddppl.com](mailto:talk@ddppl.com)



ARABIAN  
TRAVEL  
AWARDS

HotelTALK

TRAVELTALK

TRAVELTALK

TRAVELTALK

TRAVELTALK

TRAVELTALK

TRAVELTALK

ARABIAN  
CARGO  
AWARDS

MICEtalk

TRAVELTALK

TRAVELTALK

TRAVELTALK

TRAVELTALK

TRAVELTALK

TRAVELTALK



### 08

Cargo resilience tested by rising temperatures



### 12

FIATA unveils framework to tackle insider risks in logistics



### 18

dnata acquires handling firm, bolsters Italian operations



### 22

Automation reshapes MENA warehousing



### 26

Abu Dhabi launches ADEED for supply chain continuity



### 36


2,805 firms emphasise sustainability: Survey

**CARGOTALK MIDDLE EAST** is a publication of Durga Das Publications (Middle East) FZC. All information in **CARGOTALK MIDDLE EAST** is derived from sources, which we consider reliable and a sincere effort is made to report accurate information. It is passed on to our readers without any responsibility on our part. The publisher regrets that he cannot accept liability for errors and omissions contained in this publication, however caused. Similarly, opinions/views expressed by third parties in abstract and/or in interviews are not necessarily shared by **CARGOTALK MIDDLE EAST**. We wish to advise our readers that one or more recognised authorities may hold different views than those reported. Material used in this publication is intended for information purpose only. Readers are advised to seek specific advice before acting on information contained in this publication which is provided for general use, and may not be appropriate for the readers' particular circumstances. Contents of this publication are copyright. No part of or any part of the contents thereof may be reproduced, stored in retrieval system or transmitted in any form without the permission of the publication in writing. The same rule applies when there is a copyright or the article is taken from another publication. An exemption is hereby granted for the extracts used for the purpose of fair review, provided two copies of the same publication are sent to us for our records. Publications reproducing material either in part or in whole, without permission could face legal action. The publisher assumes no responsibility for returning any material solicited or unsolicited nor is he responsible for material lost or damaged. This publication is not meant to be an endorsement of any specific product or services offered. The publisher reserves the right to refuse, withdraw, amend or otherwise deal with all advertisements without explanation. All advertisements must comply with the UAE and International Advertisements Code. The publisher will not be liable for any damage or loss caused by delayed publication, error or failure of an advertisement to appear.

# AI DRIVES predictive cargo ops

The air cargo and logistics sector is undergoing a transformation, moving from manual processes to AI-driven, proactive networks that prioritises speed, efficiency, and resilience. AI-powered systems are enabling logistics providers to shift from reactive troubleshooting to predictive, intelligent operations. AI is rapidly being adopted to analyse large datasets for demand forecasting, inventory optimisation, and route planning to allow firms to maximise fuel consumption and minimise downtime.



 Dr Shehara Rizly Fernando

**A**I is rapidly becoming the cornerstone of modern cargo operations, enabling companies to move beyond reactive processes toward predictive and autonomous decision-making. By leveraging machine learning algorithms, air cargo operators can optimise route planning, forecast demand fluctuations, and anticipate maintenance requirements, significantly reducing downtime and operational costs. These capabilities are critical in an industry where time sensitivity and precision impact profitability and customer satisfaction.

Complementing AI, advanced technologies such as the Internet of Things (IoT), blockchain, and digital twins are creating a more connected and transparent logistics ecosystem. IoT-enabled sensors provide continuous, real-time data

on cargo conditions and movement, allowing stakeholders to monitor shipments end-to-end, and respond proactively to disruptions. Blockchain enhances trust and security by enabling immutable transaction records, while digital twins offer virtual replicas of supply chains to simulate scenarios and improve planning accuracy.

Importantly, these advancements are democratising access to sophisticated tools, empowering small and medium-sized enterprises to compete more effectively on a global scale. As sustainability becomes a central industry priority, AI-driven efficiencies are contributing to reduced fuel consumption and lower carbon emissions.

In a complex and regulated environment, adoption of intelligent technologies is no longer a competitive advantage — it is a strategic necessity shaping the future of air cargo.

## Data-driven systems reduce human error

AI and advanced technologies are altering cargo operations by enabling real-time visibility, predictive maintenance, and intelligent automation. From warehouse handling to cargo terminals, data-driven systems improve decision-making, reduce human errors, and enhance operational reliability. At DIMOS, we integrate AI-based solutions such as smart vision systems and automation upgrades to modernise legacy infrastructure. Automation reduces costs while enabling higher accuracy and faster processing.



**Martin Bremen**  
Managing Director  
DIMOS

“From warehouse handling to cargo terminals, data-driven systems improve decision-making and enhance reliability.”

## Automation increases operational efficiency

For freight forwarders, AI improves visibility, speed, and decision-making across fragmented supply chains. From faster pricing and routing to automated documentation and tracking, they reduce manual



**Aaron Smith**  
CEO  
ACI Logistics

“AI supports revenue optimisation through smarter pricing, better consolidation, and improved load planning.”

work and errors, enabling consistent service delivery. AI also supports revenue optimisation through smarter pricing, better consolidation, and improved load planning. Automation increases operational efficiency by slashing bottlenecks, improving turnaround times, and lowering costs.”

## AI plays vital role in dynamic pricing

New technologies and AI in air freight improve real-time visibility, demand forecasting, and capacity planning. In markets such as the UAE, there is communication between airlines, agents, and cargo handlers. This results in minimal disruption and efficient processing of cargo documentation and loading/unloading. It plays a vital role in revenue optimisation through dynamic pricing, proper space management, and optimal cargo loading in air freight. AI improves efficiency through automation and faster turnaround time.”



**Rizwan Kareem**  
Director, Air Freight  
ATS World

“AI and other advanced technologies in air cargo improve visibility, demand forecasting, and capacity planning.”

## Automated workflows increase throughput

Intelligent software orchestrates robotics, storage, and workflows, improving visibility and decision-making. In systems, such as AutoStore, one operator can match four to five pickers with accuracy, strengthening throughput and efficiency. AI-driven optimisation improves efficiency and revenue by enhancing how goods are handled in logistics facilities. Predictive planning, dynamic inventory positioning, and automated workflows hike throughput, while cutting costs and minimise delays.”



**Rami Younes**  
General Manager  
Swisslog Middle East

“Intelligent software orchestrates robotics, storage, and workflows, improving visibility and decision-making.”





## Tech allows forwarders to manage disruptions

AI is altering air cargo by enabling predictive analytics, route optimisation, real-time shipment tracking, and automated documentation. Innovations in hardware, cloud computing, remote monitoring, data



**Jacob Chacko**  
Director, Operations  
WeFreight

“By leveraging data-driven insights, companies can streamline processes, increase throughput, and maximise profitability.”

capture, analytics and AI have revolutionised operations. These provide visibility, reduce delays, and allow forwarders to manage disruptions and deliver reliable services. By leveraging data-driven insights, freight companies can smoothen processes, increase throughput, and maximise profitability.”



## Technology at the heart of supply chain success

In today's logistics, technology sits at the heart of every successful supply chain. AI helps in anticipating issues, links data across complex operations, and enables fact-based decisions. Combined with automation,



**Orkun Saruhanoglu**  
CEO, DHL Supply Chain  
Middle East & Africa

“Real progress takes place when digital tools are managed by experienced teams and scaled across borders.”

it allows networks to adapt proactively as conditions change. Real progress takes place when digital tools are managed by experienced teams, governed responsibly, and scaled across borders. In the Gulf region, this balance is essential to deliver reliability, resilience, and trust.

## AI improves revenue optimisation, efficiency

AI and advanced technologies enhance cargo operations through predictive demand forecasting, automated capacity planning, and real-time shipment visibility. Internet of Things enables monitoring and tracking, while



**Hisham Malakah**  
Acting VP, Corporate  
Services, Saudia Cargo

digital platforms streamline documentation and customs processes. Advanced analytics support faster decision-making, reduce disruptions, and create more resilient, data-driven logistics ops. AI improves revenue optimisation through dynamic pricing and capacity.”

“Advanced analytics support faster decision-making, reduce disruptions, and create data-driven operations.”

# Cargo resilience tested by rising temperatures

As climate change amplifies the effects of summer heat, the logistics and cargo sector strengthens its operational resilience through advanced technology, infrastructure upgrades, and adaptation. The industry is focused on mitigating heat-related risks, as rising temperatures threaten to disrupt supply chains.



**Dr Shehara Rizly Fernando**

Preparing for the summer season is a well-established practice across the region’s cargo and logistics landscape. With temperatures soaring, cargo agents, and operators adopt proactive strategies to ensure seamless operations, particularly for sensitive and high-value shipments. The region’s position as a global logistics hub makes operational readiness even more critical during this period.

Focus lies in handling of temperature-sensitive cargo such as pharmaceuticals, perishables, and floriculture products. These commodities demand strict compliance with cold chain protocols, supported by advanced storage facilities, real-time monitoring systems, and efficient handling processes. Cargo agents leverage multimodal transportation solutions, combining air, land, and sea connectivity to maintain speed and integrity throughout the supply chain.

Infrastructure remains a cornerstone of the region’s preparedness. State-of-the-art airports, dedicated cargo terminals, and integrated logistics zones provide the backbone for

efficient cargo movement. Investments in technology and automation enhance operational accuracy and responsiveness, reducing risks associated with extreme weather conditions.

As climate variability continues to pose challenges internationally, the

local cargo sector stands out for its ability to anticipate, adapt, and execute. By aligning infrastructure strength with operational expertise, the air cargo industry ensures continuity, reliability, and resilience — reinforcing its role as a critical enabler of global trade during the most demanding summer months.





## Uncertainty is the new norm due to disruptions

As a hybrid carrier, we adapt to seasonal shifts. Most carriers scale back schedules from Asia-Pacific to service high-frequency transatlantic summer routes. Given that direct flight connectivity becomes limited,



**Zameer Marikkar**  
Chief Commercial Officer  
Fits Cargo

“When a gateway becomes unavailable, we leverage charter flights between key hubs and keep cargo moving.”

we route shipments via alternative ones. Uncertainty has become the new norm following disruptions, prompting carriers to reduce fleets and frequencies. When a gateway becomes unavailable, we leverage charter flights between key hubs and linehaul solutions, to ensure continuity, and optimise costs.

## Focus is to keep things running smoothly

During summer, the focus is to keep operations running safely and efficiently. Unlike other industries, we do not have the luxury of adjusting delivery windows or avoiding delivery timings during peak heat hours. This makes preparation and execution more critical. Temperature control is enforced for the products, be it perishables, chilled or frozen to ensure the quality and safety of supplies reaching the crew onboard. With the right infra, including a fleet of refrigerated vehicles and cold chain assets, we can handle last-minute changes.”



**Arul Prabeen**  
General Manager  
Shipstar

“Temperature control is enforced for products, be it perishables, chilled, or frozen, to ensure the quality and safety of supplies.”

## Bound to supporting the offshore sector

With the recent introduction of IEC Welfare to the market, we have established a foundation to advocate for expansion of internet access for personnel operating in remote and isolated environments. We are committed to



**Alaa Alsadi**  
Commercial VP, Energy  
IEC Telecom UAE

“Solutions such as IEC Welfare foster resilience and stability, helping teams remain engaged and informed.”

supporting the offshore sector with efficient, cost-effective solutions, enabling the rollout of crew connectivity at scale. Solutions such as IEC Welfare foster resilience, stability, support wellbeing and help teams remain engaged, informed, and operationally effective in challenging environments.

## Imperative to safeguard cold chain

At SolitAir, we set the pace for summer by safeguarding the cold chain for perishables. Aircrafts are close to our facility, with used cool dollies. Cargo moves to perishables centre, offering 2–8°C storage across 136 sqm and 15–25°C across 680 sqm area and a 300 sqm temperature-controlled DG room. The crisis management committee drafts and activates emergency response protocols. The teams take part in mock exercises to respond faster and keep operations running smoothly during crisis.



**Kinan Al Hasani**  
Ground Operations  
Manager  
SolitAir

“The teams take part in mock exercises to respond faster and keep operations running smoothly during crisis.”

# Etihad fortifies cargo capacity with **Dhaka launch**

Etihad Airways will launch a flight to Dhaka from 26 June to fortify trade and cargo links across the South Asia corridor, while responding to demand for logistics and travel between the UAE and Bangladesh. The flight forms part of Etihad’s approach to expanding its global network.



**CT Bureau**

The four-time weekly service to Hazrat Shahjalal International Airport will strengthen linkage between Abu Dhabi and Bangladesh, while supporting the continued expansion of cargo movements alongside passenger demand across the airline’s international network, with Abu Dhabi serving as an important gateway for trade between South Asia and the global markets.

Operated by Etihad’s Boeing 777 aircraft, the service will offer 28 Business and 374 Economy seats, providing significant wide-body belly-hold capacity to support growing cargo flows, alongside passenger demand, on a route that is critical for trade, business connectivity, and family travel.

“Dhaka is an important market, with strong and sustained demand across both passenger and cargo segments. This ser-

*Operated by Etihad’s Boeing 777, it provides wide-body belly capacity to support growing cargo flows*

vice allows us to deploy capacity where it is most needed, strengthening links between Bangladesh, the UAE, and key global markets,” said Antonoaldo Neves, CEO, Etihad Airways.

“The route plays a vital role in supporting export-driven industries, particularly in sectors such as

textiles, while enhancing Abu Dhabi’s connectivity across South Asia.” The UAE is home to one of the largest Bangladeshi communities in the world, and the flight will provide a direct and efficient link for families, alongside seamless onward connections via Abu Dhabi.

Bangladesh continues to see strong economic growth, underpinned by its garment and textile sector. The introduction of a wide-body capacity on the route will enable efficient movement of cargo, particularly for Bangladesh’s garment and textile sector, supporting exporters with improved access to markets across the Gulf, Europe, and North America.

The flight will also open valuable connections for the Bangladeshi diaspora communities in the UK, Italy, and North America,

who will be able to travel via Abu Dhabi to Dhaka with ease. The route will serve point-to-point for travellers between Abu Dhabi and Dhaka, as well as those connecting beyond.

**HIGHLIGHTS**

- ❖ **Strengthening trade and cargo links between the UAE and Bangladesh**
- ❖ **Seasonal four-times weekly service from 26 June till 24 October**
- ❖ **Enhances cargo capacity across key trade corridors**
- ❖ **Serving one of the largest diaspora communities globally**

# SolitAir expands Africa, India cargo networks

SolitAir has beefed up its cargo network expansion with the launch of new routes to Djibouti and Kochi, fortifying connectivity between Dubai, the Horn of Africa, and India. The dual expansion stresses the airline's focus on emerging Global South corridors, enhancing trade efficiency and improving transit times.

CT Bureau

SolitAir's latest expansion into Djibouti and Kochi marks a step in its strategy to build a resilient and efficient cargo network linking key emerging markets. The addition of Djibouti positions the airline within a critical gateway to the Horn of Africa, a region important for regional and global trade flows. With its location and growing logistics ecosystem, Djibouti offers enhanced access to neighbouring markets, supporting faster and reliable cargo flow.

The launch of services to Kochi strengthens SolitAir's footprint in India,



**Hamdi Osman**  
Founder CEO  
SolitAir

becoming its fifth destination after Ahmedabad, Mumbai, Bengaluru, and Delhi. The move reinforces the airline's commitment to one of the world's fastest growing logistics markets, improving linkage between

*With its location, Djibouti offers enhanced access to neighbouring markets, supporting faster cargo flow*

Southern India and global trade lanes via Dubai.

With a network spanning 50 cities, SolitAir continues to focus on enabling efficient cargo flow across developing economies. Both new routes are likely to reduce transit times,

while improving supply chain reliability for customers operating in high-growth regions.

The carrier stated these launches reflect execution capabilities, driven by co-ordinated operational planning, ground team, and close stakeholder collaboration. It acknowledged the role of partners in ensuring seamless route rollouts.

CEO Hamdi Osman highlighted the teamwork for achieving this milestones. He said, "I want to thank each member of the team in Kochi for a job well done." SolitAir extended appreciation to the Kochi International Airport team for their support. 🇸🇦



# FIATA unveils framework to tackle **insider risks** in logistics

FIATA has unveiled initiatives to fortify resilience, risk mitigation, and digital accountability across supply chains. Launched in Geneva, the developments reflect the federation's commitment to equipping members with practical tools, digital solutions, and governance framework to navigate complex logistics.

**CT Bureau**

**I**nternational Federation of Freight Forwarders Associations (FIATA) has taken a step in addressing operational vulnerabilities following the release of, 'Logistics Security: Preventing Insider Threat. Developed under the FIATA Advisory Body on Safety

and Security'. The document provides a framework to help forwarders identify, understand, and mitigate risks originating from within organisations.

As the supply chains become more interlinked, insider threats are emerging as a vital challenge. The guidance outlines how

---

*As the supply chains become interlinked, insider threats emerge as a challenge*

---

such risks manifest across logistics operations and highlights exposure without promoting assumptions of misconduct. Instead, the guidance encourages awareness-led prevention.

Stressing managerial nature of the issue, Niels Beuck, Chair, Advisory Body on Safety and Security,



said, “Insider threats must be understood as a management risk to be controlled, not merely a technical problem.” The publication underscores strategies across the employee lifecycle, including robust compliance programmes, internal controls, and continuous evaluation mechanisms. A practical checklist supports organisations in translating policy into action, reinforcing a culture of trust and accountability.

FIATA has expanded its value proposition through a partnership with Otonomi, aimed at delivering instant, digital cargo, and delaying insurance solutions to forwarders worldwide. Formalised during the 2026 FIATA Headquarters Meeting in Geneva, the collaboration responds to growing

## *The publication underscores strategies across the employee lifecycle, including robust compliance*

disruptions in global logistics, particularly shipment delays, across air and ocean cargo, and e-commerce.

Through the Otonomi platform, FIATA members can obtain real-time insurance quotes by entering basic shipment details such as air waybill or Bill of Lading information. Proprietary algorithms assess risks across routes and carriers, enabling instant



policy issuance without paperwork or manual underwriting. Flexible options allow users to select delay triggers and coverage limits tailored to operational requirements.

Dr Stéphane Graber, Director-General, highlighted the importance of the initiative. He noted the partnership equips members with “digitally-driven tools to protect both their business and clients’ cargo efficiently.” Yann Barbaroux, CEO, Otonomi, added the collaboration addresses a longstanding gap in delay risk protection, bringing scalable, purpose-built solutions to the global forwarding community.

In parallel, FIATA has reinforced its leadership in digital governance with the launch of a signable version

of the FIATA–GSF Data Governance Charter, developed in collaboration with the Global Shippers Forum. Originally introduced in 2023, the Charter defines principles governing the responsible use and protection of trade data.

The signable format alters these principles into enforceable commitments, enabling organisations to align with industry standards. It allows FIATA to integrate compliance into partnerships, particularly with technology providers thereby embedding data governance as a prerequisite for collaboration. “Data is one of the most valuable assets in modern trade, and it must be protected accordingly,” said Dr Graber, stressing responsible data governance is now a fundamental expectation. 🚀

### THREAT GUIDANCE

- ❖ Elevates insider risk as a critical management responsibility
- ❖ Provides lifecycle-based prevention strategies and controls
- ❖ Includes actionable checklist to operationalise security measures

### KEY HIGHLIGHTS

- ❖ Instant digital cargo and delay insurance access
- ❖ AI-driven algorithms for real-time risk assessment and quotes
- ❖ Diverse sectors covered, including pharma, perishables, and e-commerce



# AI agents deliver up to **US\$ 100k savings** in logistics

The logistics and e-commerce sectors are entering a phase of digital acceleration as Yango Tech launches Industrial AI Agents to alter operational workflows. With supply chains becoming more complex, businesses are seeking intelligent systems to deliver real-time decision-making and automation.



**CT Bureau**

Yango Tech launched Industrial AI Agents, which are designed to function as digital employees, integrating directly with enterprise systems such as CRM, HR, and finance platforms to execute tasks across customer service, analytics, compliance, and operational decision-making.

For logistics and e-commerce, this translates into order processing, improved customer interactions, and data-driven supply chain optimisation. The platform delivers up to 95 per cent first-contact resolution and cost efficiencies, with potential savings reaching US\$ 100,000 per month.

*For logistics and e-commerce, this translates into order processing and operational decision-making*

The solution supports smart city logistics through real-time urban analytics, mobility optimisation, and AI-powered dispatch systems, enabling efficient last-mile delivery and traffic flow management.

By embedding AI into logistics ecosystems, organisations can enhance visibility, reduce delays, and improve asset utilisation.

“Enterprises today are under pressure to turn AI into practical outcomes. Our Industrial AI Agents were built to help organisations deploy autonomous digital employees that integrate securely into existing systems and deliver measurable productivity gains,” said Vladimir Razuvaev, Chief Executive, Yango Tech, commenting on the framework’s launch.

With 84 per cent of GCC organisations adopting AI, the opportunity now lies in execution. Our vision is to help healthcare providers, banks, private firms and cities scale AI responsibly, while fortifying performance, transparency and service quality,” aligned with the

UAE’s digital transformation agenda, the AI platform supports secure, sovereign deployments, and local data control, thereby enabling logistics stakeholders to transition from AI strategy to real-world implementation. 🚀

**IMPORTANT TAKEAWAYS**

- ❖ AI agents enhance logistics efficiency and automation
- ❖ Integration enables real-time, data-driven decisions
- ❖ Supports UAE’s AI-led supply chain transformation

JOIN AN EXCLUSIVE GROUP  
OF PROPERTIES WORLDWIDE  
THAT SET THE GLOBAL  
BENCHMARK

THE WORLD'S GOLD STANDARD IN  
HOTEL SUSTAINABILITY IS HERE

GSTC CERTIFICATION NOW IN INDIA

MORE GUESTS.  
LOWER COSTS.  
STRONGER BRAND.  
SMARTER SUSTAINABILITY.

+91 9871003279

AUDITED BY QUALSTAR, CERTIFIED BY UCSL



United  
Certification  
Systems



QUALSTAR.CO.IN

# Royal Air Maroc upgrades cold chain capacity

Royal Air Maroc Cargo is strengthening its temperature-controlled logistics capabilities with an upgrade of its cold storage facilities at Casablanca Mohammed V International Airport in Morocco. The expansion project responds to demand for pharma logistics and perishables across Morocco and Africa.

## CT Bureau

The upgrade will see the facility expand from four to five cooling chambers, delivering a temperature-controlled area of 590 sqm. The redesigned layout will include three dedicated import chambers and two export chambers, enabling precise handling of diverse cargo categories, such as fresh produce, flowers, and pharmaceutical shipments.

“Three key factors led to our substantial investment in upgrading the cold storage facilities at Casablanca airport,” said Rita Chraibi, VP, Cargo, Royal Air Maroc. “Firstly, temperature-controlled facilities should be renovated at least every 15 years. Secondly, the fleet expansion is already seeing a steady increase in volumes through our main hub, and thirdly, we are registering fast logistics growth in pharmaceuticals in Morocco and Africa due to improving healthcare infrastructure and rising demand — a trend that will continue for years to come.”

The enhanced facility will feature multiple

temperature zones, including 2°–8°C and 15°–25°C chambers for both import and export cargo, as well as a dedicated frozen chamber. This configuration ensures compliance with strict cold chain requirements, while supporting a broader range of cargo types.

“Our facilities were new when we moved into them in 2012 and have since undergone many regular maintenance and system calibration checks,” added

*Facilities should be renovated every 15 years. The expansion of the fleet is seeing a steady increase in volumes*

Hicham Kharbach, Head, Cargo operations. “Yet it is clear Royal Air Maroc Cargo needs more and larger storage chambers to continue providing seamless top-quality service as volumes grow. As equipment and technology have developed since then, we stand to benefit from improved energy efficiency in our temperature-

controlled warehouses, which will soon be powered by solar energy.”

Beyond Casablanca, Royal Air Maroc Cargo operates temperature-controlled storage facilities across all six Moroccan airports, ensuring a consistent cool chain network nationwide. Its Fresh Cargo product enhances service quality by prioritising temperature-sensitive shipments with specialised containers and handling protocols. 🌞

### SERVICE QUALITY

- ❖ Five cooling chambers
- ❖ Total cold storage capacity of 590 sqm
- ❖ Dedicated import and export temperature zones
- ❖ Solar energy integration to boost sustainability



# India–Kuwait multimodal logistics cut transit time

SAL has advanced regional supply chains by moving goods weighing 7,000 kg from India into Kuwait via a land corridor. The cargo, arriving from Al-Qaisumah Airport, was ferried overland, preserving product quality and ensuring timely delivery. This move boosts multimodal logistics linkage between the two nations.

CT Bureau

Saudi Logistics Company (SAL) manage three inbound air cargo flights from India, transporting temperature-sensitive products and perishables, such as fresh vegetables and fruits through its integrated air-to-land logistics network.

Upon arrival at Al-Qaisumah Airport, shipments are cleared and transferred onto overland routes into Kuwait, maintaining cold chain standards to safeguard perishables.

The newly established corridor transporting perishables and temperature-sensitive products underscores a push to strengthen regional supply chain resilience, particularly for essential commodities. By combining air freight with efficient land transport, the company has reduced the transit times, while



ensuring reliability across the borders.

This development reflects cooperation between the Kingdom of Saudi Arabia and Kuwait to streamline logistics operations and facilitate smoother trade and cargo movement.

*The corridor is likely to play a role in backing growing volumes and enhancing regional food security*

As demand for faster and more dependable supply chains increases, the corridor is likely to play a vital role in supporting growing volumes and enhancing regional food security.

Continued investment by SAL in multimodal capabilities positions it as a key enabler of integrated logistics solutions across the Gulf region. 🇸🇦



## IN BRIEF

- ❖ SAL moves 7,000 kg fresh cargo to Kuwait
- ❖ New corridor boosts supply chain resilience
- ❖ Multimodal logistics enhances speed, efficiency

# dnata acquires handling firm, bolsters Italian operations

dnata has completed integration of its Italian handling business into its global organisation, with all activities now operating under the company. This milestone follows dnata’s acquisition of its Italian ground services subsidiary, previously operating as Airport Handling, after increasing its shareholding in recent years.

**CT Bureau**

The integration builds on a series of recent developments that reinforces dnata’s long-term commitment to the Italian aviation market. In 2025, Airport Handling began operations at Rome Fiumicino Airport, extending dnata’s ground handling footprint beyond Milan’s Malpensa and Linate airports and doubling its operations across Italy.

Recently, dnata announced a €25 million investment to scale up capacity in Milan by building an advanced new facility at Malpensa Airport. The project will not only create more capacity but also support growth across Italy’s logistics ecosystem.

## OWNERSHIP

“This milestone reflects our long-term confidence in the Italian aviation sector,” said Clive Sauv -Hopkins, CEO, Airport Operations, dnata.

“From the beginning in Dubai to our growing presence across Europe, dnata has focused on delivering globally aligned services, while maintaining a local approach. As demand continues to rise, we are investing in capacity, technology, and talent to remain a partner to airlines operating in Milan, Rome, and beyond.”

dnata first entered Italy through an investment in Airport Handling S.p.A., and increasing its stake to



*dnata invested in Airport Handling S.p.A. and hiked its stake to 70% before assuming full ownership in 2025*

70 per cent before assuming full ownership in 2025. The integration positions Italy firmly within dnata’s network, enabling closer alignment with global systems, governance, and operational processes.

## EUROPEAN LINKS

dnata’s handling in Italy represents one of its largest presence in Europe. Its team supports around 150,000 flights annually and serves over 60 airline customers. dnata’s Catering & Retail division maintains a national

presence, producing more than 7 million meals every year at 11 airports across Italy. As a major employer, dnata currently employs more than 5,000 employees in Italy, contributing to local economies. The upcoming Milan cargo facility will create more than 150 new jobs with the company.

## EXPANSION

Founded in Dubai in 1959, dnata has grown from a local provider into one of the world’s leading air and travel services companies. Today, dnata delivers air and travel services at 120 airports worldwide. Across Europe, dnata continues to fortify its capabilities through targeted investment in major aviation hubs. Recent developments include advanced cargo infrastructure projects in Amsterdam and Zurich, expanding capacity and backing increasing market demand. Combined

with its growing presence in Italy, these initiatives reflect a strategy to build scale, resilience, and service consistency across Europe’s key gateways. Italy represents a pillar within dnata’s broader expansion underlining the firm’s commitment to high-growth aviation markets.

## OVERALL OUTLOOK

- ❖ dnata supports 150,000 flights across Italy annually
- ❖ Italian ramp and passenger operations aligned under dnata brand
- ❖ dnata employs 5,000 locals to deliver a range of air services across 11 airports in Italy

# FedEx digitises imports in KSA, reduces delays

FedEx has introduced its new FedEx Import Tool (FiT) in Saudi Arabia, marking a step toward smoothening inbound logistics as KSA speeds up trade diversification and economic growth. The platform is designed to simplify import processes, offering a unified interface that centralises shipment tracking and customs.

 CT Bureau

With features, such as real-time dashboards, proactive clearance notifications, and integrated online payment for duties and taxes, FiT enhances visibility and reduces delays across the supply chain. The system enables shipment monitoring for up to 90 days after pickup, supporting lightweight parcels, and palletised freight. The digital solution helps businesses of all sizes manage the growing import volume into the Kingdom of Saudi Arabia efficiently and with greater control.

FiT, with its integration of advanced technology and user-focused design, is set to transform the import process, enhancing efficiency, helping customers adhere to regulatory compliance needs, and improving end-to-end shipment journey. The solution supports imports across all shipment sizes, from lightweight packages to palletised freight.

“As KSA solidifies its role as a leading global trade hub, the ability to move imports efficiently is a key competitive differentiator,” said Nitin Tatiwala, Vice President, Marketing, Customer Experience, and Air Network, FedEx Middle East, Indian continent, and Africa. “FiT reflects how we are using digital intelligence to support that ambition, helping businesses



## *The solution helps businesses manage the growing import volume into the Kingdom of Saudi Arabia*

navigate import requirements with certainty, enhanced visibility, and faster, seamless customs clearance, in line with KSA's trade facilitation and economic diversification goals.”

In October 2025, the Kingdom's merchandise imports rose by 4 per cent year-on-year to SAR 80.1

billion, with China, the USA, and the UAE, ranking as the top three source markets. As KSA's import activity continues to diversify across industrial, healthcare, and consumer sectors, businesses are managing higher shipment volumes alongside detailed regulatory and documentation requirements.


The launch of FiT builds on the firm's bolstered presence in the Kingdom, with FedEx directly managing pickup, delivery, and customs clearance operations. The tool aligns with Saudi Arabia's Vision 2030 by enabling efficient and transparent import processes as volumes continue to grow. 🚚

## FEATURES OF PLATFORM

- ❖ A dashboard for greater visibility into every stage of the import shipments
- ❖ Proactive notifications to expedite the clearance process and minimise delays
- ❖ A direct payment feature for paying customs duties and taxes online
- ❖ 24x7 monitoring allows shippers to track the cargo up to 90 days after pickup

# Dubai's new **tech platform** to focus on last-mile delivery

Dubai's position as a logistics and innovation hub attracts next-gen supply chain solutions, with MovitOn raising US\$ 2 million to accelerate its Web3-powered logistics platform. The rollout aligns with an ambition to lead digital trade transformation, combining blockchain, AI, and peer-to-peer (P2P) delivery models.

 CT Bureau

**D**ubai-based Web3 logistics platform, MovitOn has successfully raised US\$ 2 million through a community pre-sale, reinforcing the UAE's emergence as a global hub for digital supply chain innovation. The milestone will accelerate the development of its blockchain-powered ecosystem, with a focus on enhancing last-mile delivery efficiency and cross-border logistics.

The pre-sale reflects growing confidence among regional and global stakeholders in decentralised logistics models that leverage blockchain, AI, and P2P networks. MovitOn aims to



**Erik Beken Tleubeck**  
Founder  
MovitOn

address inefficiencies in traditional freight and courier services by enabling direct connections between senders and travellers.

"Global logistics need more attention and care for

decades, and now we are finally witnessing its transformation. This US\$ 2 million fund validates our vision, where every traveller becomes a trusted courier, and every user can ship globally without barriers. Community support confirms demand for a decentralised, AI-powered logistics solution," said Erik Beken Tleubeck, Founder, MovitOn.

A key innovation is MovitOn's MovitBox smart IoT terminal, designed to facilitate secure, contactless parcel handovers. Combined with AI-powered compliance systems, the platform dynamically navigates international shipping regulations, positioning it as a viable solution for complex cross-border trade flows increasingly routed through the UAE.

The platform claims cost reductions of up to 75 per cent compared to

*Pre-sale reflects confidence among regional and global stakeholders in decentralised logistics models*

traditional operators, such as DHL, UPS, and FedEx, while enabling faster delivery timelines.

"Traditional logistics providers struggle with high costs, delays, and restrictive policies. MovitOn resolves these challenges, while bridging Web2 users into a decentralised ecosystem with real-world value," Vadim Andryan, Co-founder and Chief Architect, MovitOn, said. MovitOn is an eyeing expansion across the UAE, MENA region, and key global corridors. 🚚



**Logistics Impact**

- Strengthens UAE's position as a global hub for digital and decentralised logistics innovation
- Supports faster, cost-efficient cross-border trade aligned with smart mobility goals
- Enhances last-mile delivery capabilities through AI and IoT integration

**Digital Freight**

- Web3 and blockchain gaining traction in real-world logistics applications
- P2P delivery models emerging as alternatives to traditional carriers
- Integration of AI compliance systems addressing complex global shipping regulations

# Saudi Arabia enhances GCC logistics integration

Saudi Arabia has unveiled initiatives to deepen logistics integration across GCC, reinforcing supply chain resilience and regional connectivity, says **Saleh Al-Jasser, Transport and Logistic Services Minister**. KSA is aiming to streamline cargo flows and enhance multimodal operations to become a global logistics hub.

 CT Bureau

The initiatives were to introduce operational flexibility across land, sea, and air logistics to sustain trade continuity amid evolving regional challenges. Truck lifespan has been extended to as many as 22 years, including the GCC fleets, while cross-border movements has been eased by allowing truck entry for outbound cargo, including temperature-controlled goods.

At King Abdulaziz Port, a GCC storage and redistribution zone model, will segregate dedicated areas for each state, improve container managing efficiency and enable seamless cargo transfers between KSA's eastern and western gateways, the UAE Transport Minister informed.

Further incentives included up to 60 days of storage fee exemptions for



**Saleh Al-Jasser**  
Transport and Logistic Services  
Minister, KSA

*KSA ensured continuity by facilitating 300 GCC flights, deploying integrated land-air cargo*

GCC cargo, alongside new maritime and land corridors connecting, such as



## Network Expansion

- KSA speeds up GCC-wide logistics integration through multimodal initiatives
- New incentives and corridors enhance supply chain resilience and continuity of trade
- Strategic port, rail, and trucking reforms reinforce the Kingdom's hub ambitions

## Operational Continuity

- KSA facilitated over 300 GCC carrier flights
- Deployed integrated land-air cargo solutions
- Enabled the movement of 25,000 passengers across borders
- The Kingdom continues to expand capacity with more than 500,000 trucks in operation

the Jeddah Islamic Port and the Red Sea gateways.


The Kingdom ensured operational continuity by facilitating more than 300 GCC carrier flights. The flights carried integrated land-air cargo solutions and enabling the movement of more than 25,000 passengers

across the borders. KSA continues to expand capacity with 500,000 trucks in operation and new rail freight corridors launched by SAR, linking GCC ports to northern trade routes. These measures position KSA as a central logistics orchestrator within the GCC region, enhancing efficiency and connectivity. 🚚



# Automation reshapes MENA warehousing

High-density robotic systems and G2P technologies can replace manual tasks, delivering accuracy of up to 99%. This reduces dependency on seasonal labour. As a result, businesses can redeploy human capital into higher-value supervisory and technical roles.

 CT Bureau

**L**abour-intensive warehouse activities such as picking and palletising can account for up to 60 per cent of operational costs, with workforce expenses forming a significant share. Across key logistics hubs, high turnover, and rising wage expectations are increasing pressure on operators.

Automation offers a structural solution. High-density robotic systems and goods-to-person (G2P) technologies can replace manual tasks, delivering accuracy levels of up to 99 per cent. This reduces dependency on seasonal labour, while lowering costly errors and returns. As a result, businesses can redeploy human capital into higher-value supervisory and technical roles, improving productivity, while protecting margins.

## E-COMM GROWTH

MENA's e-commerce sector is expanding rapidly, with demand spikes during events such as White Friday and Ramadan straining traditional warehouse models. Manual operations alone cannot scale efficiently to meet these fluctuations.

Automated storage and retrieval systems (AS/RS), robotics and advanced

warehouse control platforms enable faster and more flexible fulfilment. Integrated omnichannel facilities allow inventory to be dynamically allocated between retail and direct-to-consumer (DTC) channels. This enables operators to scale throughput during peak periods without duplicating infrastructure, while reducing fulfilment times.

---

*Robotics and advanced warehouse control platforms enable faster and more flexible fulfilment*

---

## SPACE CURBS

Prime warehouse space near major ports and urban centres such as Dubai and Riyadh remains limited and expensive. Expanding physical footprint is increasingly unviable.

Automation technologies, including high-density storage systems and shuttle solutions, maximise cubic capacity rather than floor space.

These systems can increase storage density several times over conventional racking, while reducing travel distances



robotics, and high-bay cranes with regenerative braking, reduce power consumption. Compact facility designs, which are enabled by automation, lower requirements for lighting and climate control.

When integrated with renewable energy sources, such as solar, warehouses can reduce carbon intensity while improving operational performance — closely aligning commercial efficiency with environmental responsibility. 🌞

within facilities. By extending the lifecycle of existing assets, operators can defer costly relocations or new developments.

**FOOD SECURITY**

With govts prioritising food security, reducing waste and fortifying local supply chains has become critical. Automation plays a vital role in achieving these goals. In food and grocery

logistics, automated systems enhance traceability, precision, and consistency, maintaining accuracy levels above 99 per cent.

Multi-temperature automation allows fresh, frozen, and ambient products to be managed within unified systems, improving efficiency, and reducing spoilage. As cold chain logistics expands into

pharmaceuticals and biotech, automation is becoming essential to maintaining quality and compliance.


**SUSTAINABILITY**

Sustainability agendas such as the UAE Net Zero 2050 strategy and the Saudi Arabia’s Vision 2030 are reshaping warehouse operations. Energy efficiency is now a core performance metric. Automated systems,



# Hellmann expands **healthcare logistics** with advanced facility

A new distribution facility by Hellmann Calipar Healthcare Logistics (HCHL) has set up base at Dubai South. Hellmann expands its presence to five distribution centres in the UAE, strengthening one of the most dedicated healthcare logistics networks in the Middle East.

 CT Bureau

As regulatory needs become increasingly complex and the handling of temperature-sensitive medical products requires precision and transparency across the entire logistics chain, Hellmann Calipar Healthcare Logistics, by opening a new facility at Dubai South's Logistics District increases its warehouse capacity, while expanding customer-specific value-added services and storage solutions.

The facility is designed to meet key market requirements, including the compliant management of time and temperature-sensitive healthcare products, secure handling of hazardous material, end-to-end digital transparency, and efficient last-mile distribution.

"We are pleased to welcome another facility by HCHL to Dubai South. The expansion reflects the growing demand for specialised healthcare logistics solutions in the region and reinforces the Logistics District's role as a platform for global supply chains. Our integrated infrastructure, strategic location, and multimodal connectivity continue to support global companies in strengthening their regional operations and delivering essentials efficiently and reliably," said Mohsen Ahmad, Chief Executive Officer, Logistics District, Dubai South.



"With our fifth healthcare location in the UAE, we are not only increasing capacity, but also enhancing our responsiveness, scalability, and regulatory assurance for our customers. This expansion reflects our continued commitment to the UAE and its role as a

## *Dubai South offers premier services and access to Jebel Ali Port via a bonded logistics corridor*

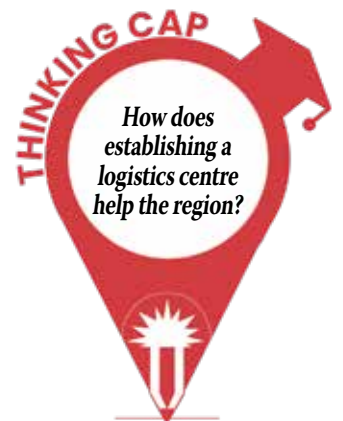
leading regional and global hub for healthcare and logistics. By investing in this capability, we are supporting the UAE's long-term vision, while strengthening HCHL's regional network

and expanding our ability to support complex, global healthcare supply chains," said Lee I'Ons, Regional Chief Executive Officer, IMEA, Hellmann Worldwide Logistics.

The new healthcare facility, built in accordance with national and international safety and environmental standards, features a dedicated chamber for hazardous material and is equipped with solar technology in line with Hellmann's sustainability goals. The expansion integrates advanced infrastructure and quality management systems aligned with international Gross Domestic Product (GDP) standards and security protocols to ensure product integrity from origin to patient.

Representing the pinnacle of logistical innovation encapsulated within

a infrastructure network, the Logistics District offers premier services and operations as well as uninterrupted access to the Jebel Ali Port via a bonded logistics corridor. The district comprises multiple zones, with direct access to the cargo terminals at Al Maktoum International Airport; EZDubai, an e-commerce free zone and a contract logistics zone. 



# AJEX activates cold chain corridor for sensitive products

AJEX has introduced a corridor across the GCC to ensure uninterrupted movement of temperature-sensitive cargo amid ongoing regional disruptions. The initiative strengthens supply chain resilience by enabling seamless domestic exports into the Kingdom of Saudi Arabia and distribution across key Gulf markets.

**CT Bureau**

AJEX's newly activated temperature-controlled corridor is designed to safeguard the integrity of temperature-sensitive shipments, while maintaining speed and efficiency across the borders. The air cargo is flown into the Kingdom of Saudi Arabia, and then distributed domestically or forwarded

*The firm has also implemented priority handling protocols and proactive coordination to minimise delays*

to countries of Kuwait, the Kingdom of Bahrain, Qatar,

and the UAE through a co-ordinated regional network.

Each shipment is handled through a GPS-enabled fleet, offering real-time temperature monitoring and end-to-end visibility.

This ensures strict adherence to cold chain standards, reducing risks associated with spoilage or compliance breaches. A centralised Control

Centre manages operations at every stage, working closely with the authorities to facilitate smoother customs clearance and faster border crossings.

The company has also implemented priority handling protocols and proactive coordination to minimise transit delays during disruptions.

By combining advanced monitoring technologies with operational agility, AJEX reinforces its commitment to maintaining cargo integrity and delivery reliability.

This initiative highlights the growing importance of precision logistics, digital visibility, and cross-border collaboration in sustaining supply chains during periods of regional uncertainty. 🚚

## INCREASING EFFICIENCY

- ❖ Dedicated cold chain corridor ensures uninterrupted GCC cargo flow
- ❖ Real-time monitoring enhances compliance and shipment visibility
- ❖ Regional coordination improves transit efficiency and resilience



# Abu Dhabi launches ADEED for supply chain continuity

7X, in collaboration with Abu Dhabi government entities, has launched ADEED, the UAE Supply Chain Support Platform, a new initiative designed to strengthen business continuity across Abu Dhabi and the UAE with supply chain and trade sectors as the regional economic landscape evolves.

**CT Bureau**

Reflecting its role as an enabler across trade, transport, and logistics, 7X will respond to business supply chain needs captured through ADEED with coordinated operational solutions across its ecosystem and sector-wide partner network. 7X enables support across air, road and sea linehaul, domestically and internationally, in addition to fulfilment-related services.

The ADEED partners include the Abu Dhabi Investment Office (ADIO), the Abu Dhabi Department of Economic Development (ADDED), Abu Dhabi Chamber of Commerce and Industry, Abu Dhabi Customs, and Abu Dhabi Quality and Conformity Council (ADQCC).

As a vital Abu Dhabi government entity and trade facilitator, ADIO is taking decisive action to ensure why the emirate remains agile, responsive, and resilient. ADEED combines ADIO's market insight and business support capabilities to provide visibility and support towards the movement of materials, industrial inputs linked to exports and inputs, for the purpose of safeguarding trade flows and supply chain continuity.

This coordinated ecosystem of partners demonstrates Abu Dhabi's interoperability in addressing

potential supply chain disruptions. ADEED enables Abu Dhabi's economic architecture and Abu Dhabi Customs works to strengthen supply chains and manage logistics cycle across ports, while addressing import and export challenges.

ADQCC will ensure the reliability of alternative sourcing by setting standards, conducting conformity assessments, and enabling access to qualified suppliers to strengthen supply chain continuity and quality. This combined approach is underpinned by 7X's logistics infrastructure and aligned with Abu Dhabi's economic growth ambitions.

As a result, the platform provides reliable access to



**Tariq Al Wahedi**  
Group CEO  
7X

the materials and inputs businesses need to maintain production. At its core, the platform uses AI to provide

*The plan uses AI to provide feasible insights into actionable supply chains to navigate logical processes*

actionable insights into supply chain and trade operations, enabling businesses and government entities to navigate processes efficiently. By structuring requests, identifying gaps in supply chain needs, and connecting

## TAKEAWAYS

- ❖ **Public-private synergy as a resilience driver**
- ❖ **Strengthening Abu Dhabi's global trade position**
- ❖ **The initiative reinforces the emirate's role as a reliable, linked, and resilient trade hub**
- ❖ **It ensures access to materials, helping maintain production continuity**



users with the correct trade and logistics expertise, the platform advances informed decision-making and operational continuity.

Challenges are raised by the ADCCI Trade Working Group, with every request monitored and orchestrated with an ecosystem of coordinated partners who facilitate the right support to ensure trade continuity.

This brings together two complementary areas of expertise: ADIO's Trade and Industry team supports businesses in identifying and connecting with international and domestic suppliers, alongside the 7X team orchestrating the logistics and transport ecosystem to ensure the goods move efficiently and reliably.

Tariq Al Wahedi, Group Chief Executive Officer, 7X, said, "The supply chain platform reflects the kind of PPP that builds long-term supply chain resilience, where public sector

leadership and comes together to support business continuity in a practical and timely way. Through our sector-wide network of strategic partners, 7X is committed to enabling responsive, coordinated solutions that keep supply chains moving, and working alongside ADIO in ways that reinforce Abu Dhabi and the UAE's standing as a resilient, globally connected

---

*By spearheading the platform, ADIO teams are guiding businesses on real-time market insights*

---

trade hub. Building on this foundation, we aim to have ADEED extend its reach nationwide, bringing this support to businesses across the emirates." Mohamed Ali Al Kamali, Chief of Industry and Trade, ADIO, said, "The

UAE leadership continues to take proactive steps to ensure the resilience of our economy and supply chains, and we are proud to support the vital manufacturing sector."

By spearheading the platform, ADIO teams are providing businesses with guidance based on real-time market insights to help maintain supply chain continuity for advancing Abu Dhabi's economic growth ambitions. These initiatives underscore why Abu Dhabi remains a globally recognised destination for trade, manufacturing, and investment he added.

ADIO continues to work with partners to back the emirate's long-term economic growth ambitions. The investment office is dedicated to assist investors and businesses of various sizes in establishing, growing, and developing operations in Abu Dhabi to international markets. 🏗️

## COLLABORATION

- ❖ **7X plays a vital role by delivering coordinated logistics solutions across air, road, and sea, along with fulfilment services**
- ❖ **The platform uses AI to provide real-time insights, identify supply chain gaps, and link businesses with partners to enable faster and more informed decision-making**
- ❖ **End-to-end supply chain visibility**
- ❖ **The platform also enhances transparency in the movement of materials, industrial inputs, and exports, ensuring smoother trade movement**



# Crown Prince approves Virtual Warehouse Initiative

His Highness Sheikh Hamdan bin Mohammed bin Rashid Al Maktoum, Crown Prince of Dubai, Deputy PM, Minister of Defence of the UAE, and Chairman of The Executive Council of Dubai, approved Virtual Warehouse Initiative (VWI) to empower people to enhance performance, and safeguard workforce.



**CT Bureau**

The Executive Council approved the Virtual Warehouses Initiative (VWI), which is overseen by Dubai Customs. In its first phase, the initiative will facilitate temporary imports into Dubai to ensure smoothen movement of goods, including artwork.

Under a new temporary admission declaration, the scheme exempts imports of artwork from customs duties and fiscal guarantees and suspended duties on private artworks for three years. It removed geographical curbs, simplifies time extensions, and introduced virtual copies of artworks for continuous high-tech tracking.

This augments upon Dubai Customs' Art Flow pilot project, providing financial and procedural advantages. By streamlining the entry of high-value

artworks, the initiative cements Dubai's status as a leading global centre in this field and offers solutions tailored for high-net-worth individuals (HNWIs).

## *The meeting okayed approvals to initiatives and \$1 billion in economic incentives for Dubai's economy*

The meeting accorded approvals to five key initiatives: \$1 billion in economic incentives for Dubai's economy and society at large; results underlining Dubai's economic growth during the Q4 2025, along with an updated methodology for measuring the emirate's GDP; the VWI; the Dubai Empowerment Strategy; and the Health and Safety

Strategy for Workers' Accommodation. The decisions aligns with the vision of His Highness Sheikh Mohamed bin Zayed Al Nahyan, President, the UAE, and His Highness Sheikh Mohammed bin Rashid Al Maktoum, Vice President and Prime Minister of the UAE, and Ruler of Dubai.

His Highness Hamdan said, "Under the visionary leadership of His Highness Sheikh Mohamed bin Zayed and His Highness Sheikh Mohammed bin Rashid, and with the determination of its people and an open, inclusive society, the UAE is well-positioned for a better future." His Highness stressed the UAE has set up a global benchmark for cities built upon a policy.

"Dubai has earned a reputation for credibility, transparency, and trust among businesses and investors worldwide, and

stands ready to meet any challenge, the determination of its people and the strength of its inclusive society comes in handy."

H.H. Sheikh Maktoum bin Mohammed bin Rashid Al Maktoum, First Deputy Ruler of Dubai, Deputy PM, the UAE, and Minister of Finance, the UAE, and H.H. Sheikh Ahmed bin Mohammed bin Rashid Al Maktoum, Second Deputy Ruler of Dubai, participated.

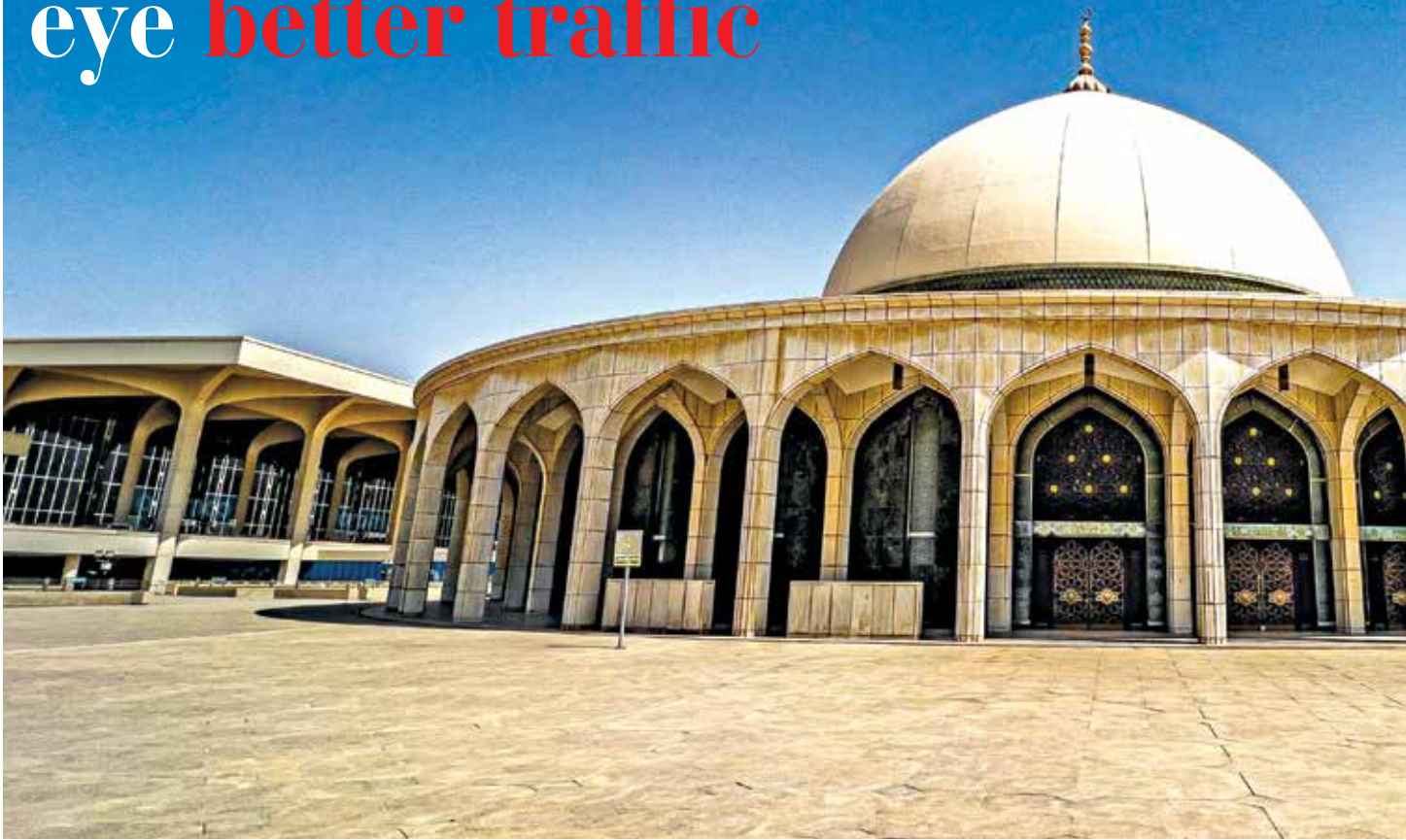


# SONO

HOTELS & RESORTS



# Gulf Air, Dammam Airports eye better traffic



Dammam Airport Company (DAC) and Gulf Air Group have partnered to enhance regional aviation performance. The engagement highlights a focus on improving operational efficiency and expanding air connectivity across key Gulf markets. The collaboration aligns to fortify sustainable growth in the region.

 CT Bureau

During an official visit to Dammam, senior leaders from Gulf Air Group met with Dammam Airports Company's (DAC) leadership in a bid to explore avenues of collaboration.

The ensuing talks centred on advancing operational integration, optimising airport, and airline coordination, and unlocking opportunities for network expansion.

Both the parties emphasised the importance of aligning strategies to

enhance connectivity between the Kingdom of Saudi Arabia and Kingdom of Bahrain, while support-

---

*The talks centred on optimising airports and airline coordination*

---





ing wider regional and international routes.

The Gulf Air delegation, led by Chairman Khalid bin Hussain Taqi, included Martin Gas, Group Chief Executive Officer, and Ahmed Janahi, Chief Executive Officer of the BAC.

*The discussion included competitiveness for both the hubs within the aviation sector*

The senior officials were received by Eng. Sufyan bin Zamil Al Zamil, Chairman and Eng. Mohammed bin Ali Al Hasani Chief Executive Officer.

The important areas of the discussion included leveraging digital solutions, improving passenger and cargo movement, and enhancing service delivery standards. The meeting also explored collaborative

initiatives strengthening infrastructure utilisation of the airports and streamlining operations of the airlines.

This partnership is likely to contribute to increased passenger and air cargo traffic volumes, improved logistics coordination, and stronger competitiveness for both the hubs within the aviation sector of the Middle East. 🇸🇦



**AT A GLANCE**

- ❖ Strengthened Saudi-Bahrain aviation collaboration
- ❖ Focus on operational efficiency and connectivity
- ❖ Joint push for enhanced pax and cargo experience

# Jeddah corridor **secures** **continuity** despite disruptions

Emirates Logistics has activated Jeddah Port as a transit hub, reinforcing regional supply chain resilience amid disruptions. Building on its Sohar success, the new solution ensures uninterrupted cargo flow, offering shippers an alternative to maintain trade flows across the GCC despite ongoing geopolitical challenges.

**CT Bureau**

Emirates Logistics has fortified its regional routing network by introducing Jeddah Islamic Port (SAJED) as an alternative gateway, enabling seamless cargo transit across the Middle East region.

The initiative comes at a time when supply chains navigate in and around the Strait of Hormuz, prompting the logistics providers to adopt, agile, and diversified routing strategies.

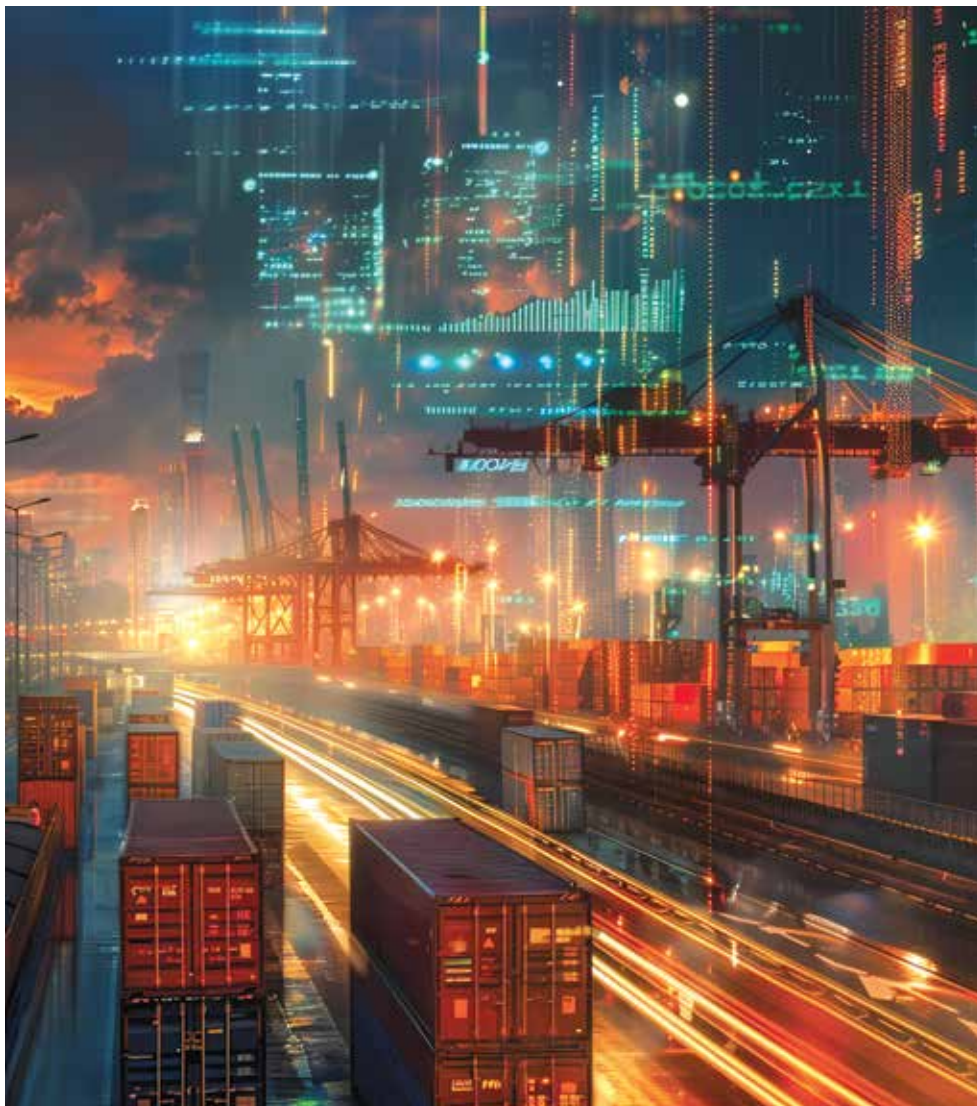
The Jeddah corridor offers bonded road connectivity into the UAE and

*By integrating Jeddah into its network, the company bolsters its commitment to supply chain resilience*

other GCC markets, including Qatar, Kingdom of Bahrain, and Kuwait, ensuring efficient inland distribution. This multimodal approach enhances flexibility, while maintaining transit times and cost efficiencies for the shippers and forwarders.

Building on the proven success of its Sohar operations, Emirates Logistics is leveraging its regional expertise to provide customised routing solutions, tailored to evolving market conditions. Teams are working closely with clients to mitigate risks, optimise delivery schedules, and maintain cargo integrity.

By integrating Jeddah into its network, the company reinforces its commitment to continuity and supply chain resilience. The corridor not only strengthens regional trade lanes but also positions Emirates Logistics as a significant enabler of uninterrupted commerce across the Gulf.



**NEW LINKS**

- ❖ Jeddah emerges as strategic alternative gateway
- ❖ Bonded road links enhance GCC connectivity
- ❖ Multimodal approach boosts resilience and flexibility

# Oman–Belarus meet to enhance trade partnerships

The inaugural meeting of Oman–Belarus Joint Committee for Cooperation and Investment in Muscat explored bilateral trade, logistics, and investment flows. Both nations underlined the importance of building long-term partnerships across important sectors and fostering cross-border investment opportunities.



Maxim Ryzhenkov, Foreign Affairs Minister, Republic of Belarus and Abdulsalam bin Mohammed Al Murshidi, Chairman, Oman Investment Authority at a meeting

CT Bureau

The Oman–Belarus Joint Committee for Cooperation and Investment, established in May 2025, convened its first official meeting in Muscat, the capital of Oman, marking a milestone in advancing bilateral trade and economic collaboration between the Sultanate and the Republic of Belarus.

Abdulsalam bin Mohammed Al Murshidi, Chairman, Oman Investment Authority, led the Oman delegation, while Maxim Ryzhenkov, Foreign Affairs Minister, Republic of Belarus, headed the Belarus team. Discussions focused on strengthening cooperation across

*The committee is positioned as a mechanism to drive cooperation across trade, energy, culture, and education*

priority sectors — industry, agriculture, healthcare, and tourism — while addressing mechanisms to boost trade exchange and streamline investment flows.

Abdulsalam bin Mohammed Al Murshidi said the first meeting reflected the shared commitment of both nations to economic diplomacy, driven

by the vision of their leaderships. He also emphasised the committee served as an important institutional platform to develop sustainable partnerships and foster long-term economic relations based on mutual interests. Al Murshidi highlighted Oman's focus on expanding global partnerships and attracting high-quality investments, noting that enhanced cooperation with Belarus could unlock new avenues for economic diversification.

Maxim Ryzhenkov underscored the potential for collaboration, citing Belarus's established industrial base and Oman's competitive investment environment supported

by advanced infrastructure. He asserted bilateral relations are likely to gain momentum through improved linkage measures, including the facilitation of air traffic, potential direct flight routes, streamlined visa processes, and strengthened diplomatic representation.

The Oman–Belarus joint committee is positioned as a mechanism to drive cooperation across multiple sectors, including trade, energy, education, and culture. With a strong emphasis on developing joint investment projects and knowledge exchange, both countries are laying the groundwork for logistics and sustainable economic growth. 🇦🇴

# Oman–UAE rail link to boost cross-border business

Trade between the UAE and Oman is heading towards a major upgrade, as work on the new cross-border railway reaches 40% completion. The project is being designed as a dedicated freight corridor to make the movement of goods faster, smoother, and less dependent on road transport.

**ICT Bureau**

The 238-kilometre line will connect key logistics and industrial hubs including Sohar, Al Buraimi, Wadi Al Jizzi and Al Ain. These locations sit at the heart of manufacturing, ports, and distribution networks, making the railway a direct trade link between production and export routes.

## REDUCED CONGESTION

Once operational, the line is expected to reduce the time it takes to move cargo between Oman and the UAE. Instead of relying heavily on trucks and border road crossings, containers can be transported in bulk by rail, then quickly transferred to ports, warehouses, and industrial zones. This is expected to ease congestion at border points and

improve delivery reliability for businesses.

The railway is also expected to strengthen supply chains across the region. Goods from Oman’s ports, especially Sohar, could reach UAE re-export hubs more efficiently, supporting trade with global markets through established maritime and air routes in the Emirates. This makes the corridor important not just for bilateral trade, but for wider Gulf logistics.

*Work has involved large-scale earthmoving and concrete activity, and major sections are taking shape*



“The milestone reflects the project’s strong foundations, as we move into the next phase focused on maintaining momentum and delivering long-term value,” said Ahmed al Masawi al Hashemi, CEO of Hafeet Railways.

Construction is progressing across difficult terrain, including mountains, valleys, and urban zones. Engineers are building tunnels, bridges, and reinforced structures to ensure freight can move safely

and consistently through all conditions.

Work has already involved large-scale earthmoving and concrete activity, and major sections are taking shape. While the project is still under construction, reaching 40% completion marks steady progress toward a transport link that is expected to re-shape regional logistics.

When finished, the railway is likely to become a key backbone for trade, thus reducing costs, improving efficiency, and creating a faster, more connected freight network between Oman and the UAE.



# Gulf tensions are reshaping global logistics

The Gulf has long been a cornerstone of global trade, linking East and West through some of the world's critical shipping lanes. Today, that role is facing renewed pressure. Ongoing geopolitical tensions have reinforced the truth that supply chains are not a supporting function but the backbone of business continuity.

**T** CT Bureau

Recent disruptions across the region has exposed the fragility of global supply chains. Extended transit times, rising freight costs, and constrained capacity have become persistent challenges. While the ceasefire may ease some tensions, it does not restore supply chain stability overnight. Backlogs, re-routed cargo, and cautious carrier strategies continue to shape the logistics landscape. Supply chains must now be designed to absorb disruption, not simply react to it.

This is evident in the Strait of Hormuz, the world's vital maritime chokepoints and the central player in the conflict. Even the perception of instability can increase insurance costs,

alter shipping routes, and disrupt delivery schedules. Supply chains will need to account for continued uncertainty in such corridors. For sectors such as luxury retail fit-out, where Alpha Nero operates, the implications are immediate. Projects depend on the precise movement of high-value components that require controlled handling and exact timing.

Any disruption within the supply chain creates a cascading effect, impacting manufacturing, delaying installation, and affecting brand performance. In this context, supply chain resilience becomes a strategic differentiator.

At Alpha Nero, logistics is integrated into our end-to-end operating model. Rather than treating

---

## *This is evident in the Strait of Hormuz, a central player and the world's vital maritime chokepoint*

---

transport as a standalone function, we manage sourcing, global logistics, and installation as one connected supply chain. This integration enables real-time visibility, response to disruption, and handling standards from origin to installation.

By localising production, we reduce reliance on extended supply chains and mitigate exposure to disruption. In today's environment, proximity is not just

efficient, it enables tighter control over timelines, quality, and risk.

Beyond localisation, resilience is driven by deeper integration. We have strengthened coordination across procurement, manufacturing, logistics, and on-site teams ensure that supply chains are aligned from the outset. This reduces inefficiencies, improves predictability, and enables delivery of complex, multi-market projects.

Flexibility is equally critical. We are deploying multimodal logistics strategies that combine sea, air, and land transport to adapt to shifting conditions.

While this requires disciplined cost management, resilient supply chains are built on optionality. The ability to pivot quickly between routes ensures continuity when traditional pathways are disrupted. 🚚




**Gowthami Kodanda Naidu**  
Head of Logistics  
Alpha Nero

*(The views expressed are solely of the author.  
The publication may or may not subscribe to the same)*

# 2,805 firms emphasise sustainability: Survey

Achilles Global Supplier Risk and Sustainability Survey has released a new survey highlighting the transparency gaps across the global supply chains. Many organisations are facing increasing regulatory scrutiny and rising operational disruptions are risking many supplier requirements.

 CT Bureau

The annual Achilles Global survey, based on responses from 2,805 organisations across sectors, such as construction, energy, manufacturing, transport, and the public sector, shows, while companies are placing emphasis on sustainability and supplier governance, visibility

---

*This lack of transparency comes as the supply chains become complex and are exposed to external pressures*

---

into extended supplier networks remains limited.

Only 6 per cent of organisations report full visibility into tier II and III suppliers, while half of them report limited or no visibility beyond their immediate supplier base. This lack of transparency comes as the supply chains become complex and are exposed to

external pressures, including regulatory expansion, operational disruption, and growing expectations around environmental and safety performance.

A lack of transparency results in a lack of trust, with only 18 per cent of organisations report they are confident in the accuracy of supplier-reported safety



data. According to the research, legislation and regulatory requirements have emerged as the primary driver of sustainability initiatives, overtaking carbon-reduction commitments and customer expectations.

Inconsistent national regulations have made some impact on maintaining consistent supplier requirements cross borders, according to 75 per cent of companies.

The survey highlights concern around supplier readiness and capacity. Nearly 60 per cent of organisations report concern about the long-term availability of specialised suppliers, reflecting mounting pressure on critical supply markets where skills shortages, regulatory demands, and operational



### *Nearly 60 per cent of organisations report concern about the long-term availability of specialised suppliers*

complexity are tightening supplier capacity.

Additionally, 64 per cent of organisations stated their suppliers are only moderately or mostly prepared to meet rising environmental and safety standards, with just 11 per cent believing that the suppliers are fully prepared.

Commenting on the findings, Adam Whitfield, Head, Global Compliance and Environmental, Social, and Governance (ESG), Achilles stated, "Supply chains today are more complex, interconnected, and increasingly exposed to disruption than ever before. Organisations are facing growing pressure from regulators, investors,

and customers to demonstrate transparency and accountability across their supplier networks."

"While many companies recognise the importance of supplier risk management, visibility across extended supply chains remains limited. This creates uncertainty where organisations need the greatest oversight, particularly as sustainability expectations and regulatory requirements continue to expand," according to the survey.

"Building resilience now requires more than periodic supplier assessments. Organisations need structured supplier data, consistent governance, and continuous monitoring to identify emerging risks early and intervene before problems escalate." Overall the survey points to the widening gap between the organisations with structured supplier risk management frameworks and those depending on fragmented or manual processes. As supply chains continue to expand across the borders and regulatory regimes, procurement

leaders are being asked to deliver oversight, supplier transparency, and operational resilience. 🚚

## HIGHLIGHTS

- ❖ Only 6 per cent of firms report full visibility into tier II and III suppliers, while half report limited or no visibility suppliers
- ❖ 64 per cent of organisations stated their suppliers are only moderately or mostly prepared to meet rising environmental and safety standards
- ❖ Overall, the survey points to widening gap between firms with supplier risk management frameworks and those relying on fragmented or manual processes

## Upcoming Events

### MAY

- 05-07** **NBAA Maintenance Conference**  
New Orleans, USA
- 05-07** **World Aviation Training Summit**  
Orlando, USA
- 05-09** **SAHA EXPO Defence & Aerospace**  
Istanbul, Turkey
- 07** **AeroPodium 4<sup>th</sup> Annual Aviation Developments**  
London, UK
- 08** **14<sup>th</sup> GLA Global Logistics Conference**  
Shenzhen, China
- 12-14** **Aviation Energy Forum (AEF) IATA**  
Paris, France
- 12-14** **ACI Asia-Pacific & Middle East Regional Assembly/Conference**  
Bangkok, Thailand
- 13-14** **MRO Southeast Asia**  
Kuala Lumpur, Malaysia
- 15-16** **Private Flyer UK**  
Wycombe Air Park, UK
- 17-19** **AFRAA Aviation Stakeholders Convention**  
Johannesburg, South Africa
- 20-21** **Helicopter Technology Central & Eastern Europe**  
Prague, Czech Republic
- 27-28** **GAD Americas/CAPA Airline Leader Summit**  
Charleston, USA

### JUNE

- 01** **TIACA Executive Summit**  
Warsaw, Poland
- 06-08** **IATA Annual General Meeting 2026**  
Rio de Janeiro, Brazil
- 09-11** **158<sup>th</sup> IATA Slot Conference**  
Bangkok, Thailand
- 24-26** **Transport Logistic & Air Cargo China**  
Shanghai, China

**For more information contact: [talk@ddppl.com](mailto:talk@ddppl.com)**

The dates shown on the Events calendar are subject to change. Please refer to EventTalk in CARGOTALK to track the changes in dates

# Lufthansa opens new MRO facility at MBRAH

Mohammed Bin Rashid Aerospace Hub (MBRAH) has inaugurated a new Painting & Grinding Centre developed by Lufthansa Technik Middle East, reinforcing the firm's commitment to expanding its capabilities in the region.



The facility is designed to support component painting and grinding processes used in structural and composite repairs, enabling faster curing and drying times, while improving repair efficiency and turnaround times for the customers across the Gulf region and beyond.

The inauguration was attended by Tahnoon Saif, Chief Executive Officer, Mohammed Bin Rashid Aerospace Hub, and Ziad Al Hazmi, Chief Executive Officer, Lufthansa Technik Middle East. Executives from both entities were present on the occasion.

Saif said, "The inauguration of Lufthansa Technik Middle East's new Painting & Grinding Centre marks another milestone in strengthening the aviation ecosystem at MBRAH. We continue to attract leading global aviation players establishing advanced capabilities to support the growing demand for aviation services in the region."

## The firm delivers component support, repair services, and maintenance of Airbus and Boeing aircraft

This is part of our mandate to reinforce Dubai's position as the aviation capital of the world, in alignment with our wise leadership's vision for the emirate."

Ziad Al Hazmi said, "This new facility marks a step in strengthening our capabilities in the region. By introducing enhanced component painting and grinding capabilities, we are improving efficiency and enabling faster turnaround times for our customers. Our continued expansion at MBRAH reflects our long-standing partnership with Dubai South and our commitment to supporting the aviation industry with reliable, high-quality technical

expertise." Lufthansa Technik Middle East provides specialised airframe and component MRO services for modern commercial aircraft, supporting airline operators across the region.

The firm delivers component support, structural, and composite repair services, and maintenance support for Airbus and Boeing aircraft. It supports operators with material management, logistics, and spare parts supply, leveraging Lufthansa Technik's global network to ensure rapid technical support for airlines worldwide. 🇦🇪



## DIEZ introduces flexible measure to enhance biz

Dubai has introduced a slew of relief measures aimed at strengthening business resilience and supporting trade and logistics operators across its key free zones. The measures include rental stabilisation, waived administrative penalties, and flexible monthly payment options to ease liquidity pressures. The Dubai Integrated Economic Zones Authority announced immediate relief initiatives covering Dubai Airport Freezone, Dubai Silicon Oasis, and Dubai CommerCity.



## GCC, India explore avenues for bilateral trade



Jasem Albudaiwi, Secretary-General, GCC, held a virtual meeting with Piyush Goyal, Minister of Commerce and Industry, Govt of India, to explore avenues to enhance bilateral trade exchange amid ongoing

global economic challenges. During the discussions, both sides focused on strengthening cooperation across trade, investment, and supply chain ecosystems to support mutual economic interests. Goyal reiterated India's readiness to extend support across economic and trade sectors, reinforcing the partnership between India and the GCC bloc. Hailing India's proactive approach, Albudaiwi highlighted the nations' deepening collaboration in trade and logistics. He said, "These policies have ensured the flow of goods and services, reinforcing resilience of the GCC states' economies and their ability to address regional and global challenges."

## Sharjah Chamber, DHL to support SMEs



Sharjah Chamber of Commerce and Industry (SCCI) and DHL Express will improve trade and logistics services for businesses in Sharjah. The pact gives members, especially small and medium businesses, access to global shipping, export support, and digital logistics tools. The deal aims to make cross-border trade easier and faster for Sharjah firms. Through DHL's network, businesses will be able to send and receive goods across Europe, Asia, the USA, and the GCC markets.

## ENOC, 7X sign agreement to expand logistics, retail

ENOC Group and 7X announced the signing of an agreement to collaborate across e-commerce, q-commerce, logistics enablement, retail innovation, and transport-ready solutions. "By combining ENOC's retail footprint and energy expertise with 7X's logistics and digital capabilities, we will improve our customers' mobility journeys in line with the UAE's vision for a digitally-driven economy," said Hussain Sultan Lootah, Group CEO, ENOC Group. Our collaboration with ENOC is an extension of our ongoing commitment to evolving logistics and retail services in response to the



UAE's market requirements. Our goal is to drive efficiency and ensure access to all our customers," Tariq Al Wahedi, Group CEO, 7X, said.

## Ajman Chamber reviews food supply chain growth

Ajman Chamber held a meeting for its Food Working Groups (FWGs) at the Chamber to review the latest developments or growth of food supply chains, promote integration, and coordination between relevant stakeholders from the public and private sectors, contributing to improving the efficiency of this sector. During a meeting, Salem Al Suwaidi, Director-General, Ajman Chamber, stressed the importance of the meeting and the need to enhance coordination and intensify joint efforts between the public and private sectors to adopt innovative and proactive solutions to raise efficiency of the food security system in line with international changes. 🇦🇪



## Ethiopian Cargo unveils new pet logistics facility

Ethiopian Cargo & Logistics Services is all set to enhance global pet logistics standards with the upcoming launch of its new Live Animal Facility in Addis Ababa. The development marks a step in fortifying specialised handling for safe transport of live animals. Designed in compliance with global animal welfare standards, the facility will focus on minimising stress and ensuring comfort throughout the journey. From domestic pets to livestock, every shipment will be handled by professionals experienced in live animal care.



## TCE delivers integrated air cargo excellence

TCE's Total Cargo Management (TCM) model is redefining airline cargo operations by combining strategic sales with full operational oversight. Acting as an extension of airline partners, the service ensures seamless coordination across the cargo value chain, from market intelligence to delivery. The Frankfurt-based team offers round-the-clock support, covering compliance, training, customs, and sensitive cargo handling. "At TCE, Total Cargo Management means ensuring intelligent sales decisions and active, end-to-end operational control," said Sarah Scheibe, MD, TCE. She highlighted a case where TCE reduced customs-related non-compliance by 95 per cent in a year. Scheibe averred that operational risks often arise during ground handling stages.



intelligent sales decisions and active, end-to-end operational control," said Sarah Scheibe, MD, TCE. She highlighted a case where TCE reduced customs-related non-compliance by 95 per cent in a year. Scheibe averred that operational risks often arise during ground handling stages.

## dnata expands Zurich handling capacity



dnata is set to expand its cargo handling capacity at Zurich Airport with the development of a new purpose-built cargo facility, scheduled to open in early 2027. The new dnata Cargo Centre will increase annual capacity from 60,000 to 90,000 tonnes. The expansion comes as volumes remain strong, with dnata handling 56,000 tonnes in 2025. Developed in partnership with Zurich Airport, the facility will feature 8,000 sqm of warehouse space and dedicated pharmaceutical handling zones compliant with GDP standards.

## Quito Group strengthens finances to drive expansion

Quito Group has refinanced €250 million in debt, while securing a new investment facility worth €70 million, fortifying its financial foundation speed up future growth. The transaction enhances to accelerate flexibility to accelerate initiatives across the cargo ecosystem. The Group integrates multiple entities, including ECS Group, Global GSA Group, CargoTech, and TCE, enabling a platform combining commercial reach, digital innovation, and operational expertise.



"By reinforcing our financial base, we are giving Quito the means to speed up the projects that will shape the next stage of our development," said Adrien Thominet, Chairman, Quito Group. A key component is Aerion, a commercial platform integrating sales, and advisory services.

## American Airlines expands summer cargo capacity

American Airlines Cargo is ramping up its summer 2026 schedule with expanded wide-body operations to meet peak global demand. The carrier will operate up to 186 global wide-body flights daily enhancing capacity across key markets. The airline plans 4,400 monthly flights between the USA and Europe, with growth at London Heathrow, reaching 21 daily departures. "Our summer wide-body schedule reflects our focus on providing reliable capacity," said Roger Samways, VP, Commercial, American Airlines Cargo. New and expanded routes include Athens–Dallas, Milan–Miami, and Edinburgh–New York, alongside strengthened services across Germany and Latin America.



## Global GSA appointed GSSA for Asiana Airlines Cargo

Global GSA Group has been appointed General Sales and Services Agent (GSSA) for Asiana Airlines Cargo in France and Germany, strengthening the airline's footprint in two key European export markets. The pact ensures continuity as Asiana integrates within the Korean Air. The collab focuses on optimising capacity across passenger networks and enhancing Asia-bound trade flows via Seoul Incheon. "France and Germany are markets for Asian trade flows," said Aytekin Saray, CEO, Global GSA Group.



## United Airlines marks centenary milestone



From its first airmail flight in 1926, United Airlines has evolved into one of the world's largest carriers, operating 1,100 aircraft across 350 destinations. The airline has played a vital role in shaping aviation, pioneering services such as flight attendants, transcontinental flights, and onboard catering. Today, it offers advanced cargo solutions, including pharmaceuticals and time-critical shipments. Sustainability remains central, with United Airlines committing to net-zero emissions by 2050 and leading in SAF adoption.

## Menzies opens airside cargo terminal in Auckland



Menzies Aviation has opened a new cargo terminal at Auckland Airport, marking the first airside cargo facility at the airport. The 32,000 sqm site is secured under a 15-year pact, doubles the company's footprint, and will serve as its main cargo gateway in New Zealand. The terminal will handle pharmaceuticals, e-commerce, and general cargo, and support freighter operations. The facility is located in the airport's Cargo Precinct and is likely to focus on time- and temperature-sensitive goods. Menzies plans to obtain IATA CEIV Pharma certification by the end of the year.

## ECS expands Americas with Uniworld partnership

Globe Air Cargo Dominican Republic, part of ECS Group, has been appointed GSSA for Uniworld Air Cargo's new freighter operations between Punta Cana and Panama City. Launching 23 March, the twice-weekly Boeing 737F will offer 40 tonnes of weekly capacity, supporting general cargo, live animals, and oversized shipments. "Securing this pact validates our commercial agility and market expertise," said Ivan Mejia, MD, Globe Air Cargo Dominican Republic. "The Dominican Republic represents a market with growth potential and a strategic gateway," added Jossette Navarro, Commercial Director, Uniworld Air Cargo. The service boosts linkage Latin America and beyond, linking destinations, including Bogotá, Lima, and Mexico, with access to North America.



## DHL expands North American data centre logistics infra

DHL Supply Chain is expanding its North American data centre logistics infrastructure with 10 new facilities covering over seven million sqft addressing growing demand from hyperscale operators. The sites will offer specialised services, including white-glove handling, rack configuration, and secure transport of high-value IT equipment, ensuring efficient deployment of data centre infrastructure. "Hyperscalers are creating the digital backbone of the AI era," said Hendrik Venter, Global CEO, DHL Supply Chain. "Our footprint is purpose-built to match that pace." Oscar de Bok, CEO, DHL Global Forwarding was also present on the occasion. 🚚



# Movements



## SAL SAUDI LOGISTICS SERVICES Saudi Arabia

**Fawaz Mohammed Al Fawwaz** has been appointed Chairman, Board of Directors, SAL. During his career, he has held executive and board-level roles across various industries and contributed to growth and operational excellence. He is experienced in finance, accounting, and corporate governance.



## ARTHUR D LITTLE Dubai

**Maurice Salem** has been promoted to Partner in ADL, Dubai. His responsibilities include client advisory, project delivery, and building high-performing teams across complex transformation programmes. He played a key role in advising government entities and sovereign developers and expanding ADL's real estate platform in the Gulf.



**Mohammad Abdullah Abunayyan** has joined as Vice Chairman, Board of Directors. His portfolio includes serving on the boards of leading organisations, positioning him as a key figure in advancing Saudi Arabia's Vision 2030 and enhancing national and global business landscapes. Abunayyan has held numerous leadership roles across diverse industries, demonstrating a commitment to sustainable growth and effective governance.



**Yiğit Saf** joined as Partner, focusing on public sector transformation. Based in Dubai, he advises government entities on socio-economic development, national productivity, and investment strategies. His role includes policymaking support, organisational transformation, and execution of national development programmes. With expertise in impact assessment and development, he contributes to shaping long-term economic agendas.



**Wajdi Al-Ghabban** has been appointed to the Board for a four-year term. His new role will focus on strategic oversight, governance, and supporting the firm's logistics growth in Saudi Arabia. Formerly CEO, COO, and Executive VP at CATRION, he played a role in developing catering infra and operational systems. With 35 years in aviation services, he brings expertise in airline catering operations, SCM, and service delivery.



**Prithweesh Ghosh** has been promoted to Partner, strengthening ADL's Private Equity and Principal Investors Practice, based in Dubai. He is also responsible for leading investment-related projects and contributing to the company's thought leadership. As co-lead for the region, Ghosh specialises in deal advisory and financing strategies. His expertise is immense in transport, hospitality, and large-scale infrastructure.



## JOB AIR TECHNIC Europe

**Jakub Dvořák** was appointed CEO in Job Air Technic, part of FL Technics Group. In his new role, he will oversee business performance, ensure operational continuity, and strengthen customer-focused maintenance solutions across Europe. Having served as Technical Director, he was instrumental in operational excellence and service delivery.



## CHAPMAN FREEBORN APAC

**Latha Narayan** was appointed President, APAC region, in Chapman Freeborn, part of Avia Solutions Group. She will lead commercial operations across Asia-Pacific, focusing on scaling business, enhancing performance, and aligning cargo, passenger, and business aviation services. She has 20 years of professional experience. 🇮🇳

# JAMAICA<sup>®</sup>

An aerial photograph of a tropical beach. The top half of the image shows clear, turquoise water with gentle waves lapping onto a wide, white sandy beach. The middle section of the beach is dotted with numerous palm trees and other tropical vegetation. Several small boats are beached on the sand. In the bottom left corner, there are several buildings with traditional thatched roofs, partially obscured by more trees and a fence.

+971 52 711 7557, vijay.dsouza@buzztravelmarketing.com

[www.visitjamaica.com](http://www.visitjamaica.com)

WAYBILL NO. 607 7218 5970

**FROM:**  
AMS

**SHIP TO:**

  
SKYSTABLES



It's never just an address,  
which is why we go beyond borders with our partners to deliver